



SIXTH FORM

PROSPECTUS
2026

Creating Futures



Jesmond Park
Academy
Sixth Form

Contents

Welcome	3
Welcome to our Sixth Form	4-5
Sixth Form Life	6-7
Dedicated Support Team	8-9
Life Outside of the Classroom	10-13
A Rich Experience & Celebrating Success	14
Our Exam Results	15
Student Destinations	16-17
Comprehensive Choices	18
Find Your Course	19
A Levels	20-50
BTECs	51-57
How to Apply	58
Entry Requirements	59

"Students in the Sixth Form value the curriculum. They enjoy their studies and are prepared well for their next steps."



Contact Us

Contact us to book a tour or to discuss your options.



jesmondparkacademy.org.uk/sixthform



0191 281 8486



sixthform@jesmondparkacademy.org.uk

Welcome



In choosing Jesmond Park Academy Sixth Form you are joining one of the finest, most successful Sixth Forms in Newcastle and one that is genuinely unique.

We focus on a core of well over 400 students in outstanding, dedicated facilities. We think we are the right size: big enough to offer leading facilities, teaching and social life; small enough to really focus on our students and help you make the right choices to succeed at university, in life and employment.

Last year the overwhelming majority of our Year 11 students chose to continue their studies with us and a record number of students joined us from other schools in Newcastle and beyond, making up our friendly and diverse Sixth Form community.

Our Academy currently offer over 30 A Level / Vocational courses, enabling students to compose a programme of study that meets their individual needs, supporting progression onto the next step beyond the Sixth Form. It doesn't stop with just A Levels. There are BTEC programmes in IT, Business, Media, Health and Social Care and Science. Our tutors and support team go the extra mile to ensure our students are supported to achieve their goals and ambitions.

Our students really do succeed, well above most other schools. Year on year we see some of the best results in the city and our students going on to the UK's leading universities. We can talk about the excellence of our teaching, support and facilities, but

"it's our students' achievements that demonstrates our success. We are very proud of each and every one of them."

We are also proud of our students' commitment outside of the classroom. They develop the discipline and resilience needed to manage their own time and study independently. They also develop further skills through our extensive volunteering and enrichment programme, which sees them serving both the school and the wider community.

Our prospectus contains a range of useful information about our facilities, student life, enrichment, courses and entry requirements. However, we would recommend that you come and meet us and see our Sixth Form for yourself. Please contact us to arrange a tour, we'd be delighted to see you in person.

Andrew Costello
(Director of Sixth Form)



secured their first choice of university place



of A Levels graded at A* to C



Pass rate across A Levels and BTECs

Stats based upon Year 13 2025 results.

We encourage our students to *be their own people*

Our students enjoy access to their very own, dedicated Sixth Form Centre, which includes:



Sixth Form Bistro

Only Sixth Form students are allowed to use the Bistro. You can buy a hot drink, a snack or some much needed chocolate! You can also get breakfast and lunch at very competitive prices. It is an area for Sixth Form students to relax, to catch up with some group work over a coffee, chat and socialise.



Ayesha's Library and IT Suite

The Sixth Form Library is a dedicated study area used by students throughout the day. It is designed for quiet individual study, with space for work by small groups. It provides an environment where students can study, carry out research, prepare assignments, work on UCAS applications or catch up on some reading. The Library is named after Ayesha Ahmed, a former student who still serves as an inspiration for our Sixth Form students. There is study space for 60 students – comprising of 30 PCs and seating for 30. Students also have access to a bank of 10 Netbooks for use in the Library or other communal areas.



Common Room & Study Rooms

The common room is a large dedicated social space for our Sixth Formers to meet up with friends or to relax. It is ideally situated between our formal study areas, Bistro and Student Support Team office. In addition to the Common Room there is a series of open classrooms which have been allocated for quiet study time, so students don't need to leave the premises to study, complete work or revise for exams.

“The Sixth Form facilities are great and it's so useful to be close to everything in the school but also be in our own space.”



Library Facilities



STUDENTS

The library has space for 60 students.



PC'S

Students have access to 30 PC s with seating.



NETBOOKS

There are 10 Netbooks available to use in communal areas.

We celebrate our *friendly and diverse community* with social events across the year, organised and run by our students, held in our large common room.



“Our Sixth Form is one of the most popular in the city. Your individuality will be embraced as no uniform is worn by our Sixth Formers.”



Work hard, *play hard*

During the working day, within our Sixth Form Centre you can use your free time to complete coursework, revise for exams, to meet up with friends, to grab something to eat or drink or play sports.

The indoor and outdoor sports facilities at Jesmond Park Academy are outstanding and a large number of our students are involved in a variety of different sports activities and sports teams, including football, rugby, athletics, basketball, netball and golf to name a few. Our facilities include grass and all weather pitches, Sports Hall, Gymnasium, Fitness suite, Netball courts, Tennis courts and Athletics facilities.

“The teachers really do care about the students’ education, equipping us with the right skills to get to the right university for us.”

Student *social life*

It isn’t all about hard work all of the time! As well as working hard in their studies, our students have a superb social life. It all culminates with the Leavers’ Summer Ball, where staff and students celebrate the end of their studies at Jesmond Park Academy together.

Debating Society and European Youth Parliament

We have a really successful debating club in our Sixth Form. The students meet regularly to plan, discuss and practice their debating skills. Then they get the chance to put them into practice against other schools. The highlight of the debating year is the European Youth Parliament. At this prestigious event students are challenged to debate important issues with students from all over the country. The event is friendly but competitive, and standards are very high. In 2023/24 our students were successful in the Regional event and then did so well in the National event that in 2024 they were invited to the International round in The Hague in the Netherlands.

Our school debaters go from strength to strength!



Dedicated Support Team

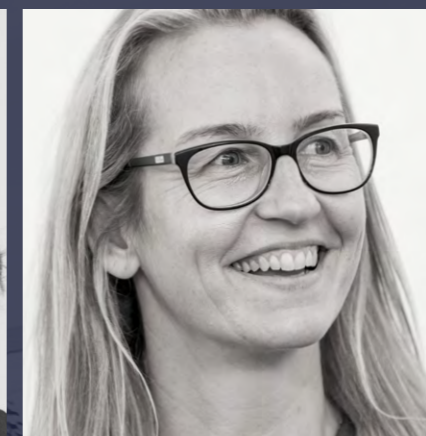
In addition to our subject teachers, our Sixth Form has its own Management and Support Team, dedicated to supporting our Sixth Form students. This team are always accessible to students and are ideally located just off from the Common Room within our Sixth Form Centre.

Our Support Team ensure all students joining our Sixth Form are matched with the right course options to help them achieve their career ambitions and will continue to support students' wellbeing and academic needs throughout their time with us, signposting students to any financial or other types of support offered by third parties if needed.

Students get to know this team very well, they are the heart of the Sixth Form Centre and provide trusted and friendly guidance to ensure all students enjoy their time in our Sixth Form and get the most out of their experience.

When it comes to thinking about life post A Levels/BTECs, our Support Team will help students find the right university course or further education routes and apprenticeships that align with their career ambitions. They will also help with the application process and arrange mock interviews to prepare students for the next steps.

"The tutors are so supportive, they drive you to achieve your best"



"The Sixth Form Team are supportive and have given me the help and advice needed to make informed decisions about my future"

Contact Us

Contact us to book a tour or to discuss your options.



jesmondparkacademy.org.uk/sixthform 0191 281 8486 sixthform@jesmondparkacademy.org.uk

Being a Sixth Form student isn't all about being in a classroom

Our students are involved in a wide range of activities and societies.

We know Sixth Formers want to run their own lives and students are encouraged to start up their own activities, receiving support from members of the Sixth Form Team to do so. These range from bands and sports societies to cultural and study groups. Additionally the school also supports the following activities and events:

Student Council

Members of our Sixth Form Student Council play an active role in the running of their Sixth Form.

They provide feedback from the rest of the student body, make suggestions about improving facilities and coordinate fundraising events. They also collaborate with the lower school student council to address issues across the whole school.

The Council have historically supported charities such as Barnardo's, St Oswald's Hospice, Children in Need, Marie Curie Cancer Care and Unicef. They also take a particular interest in supporting local charities and have fundraised for homeless and refugee services based here in the North East.

Sixth Form Magazine

Professionally produced by Sixth Form students with one issue per term, articles include news, reviews, letters and creative writing.

Students take on all aspects of the design and production process: writing articles, taking and editing photographs, conducting interviews and designing the layout, bringing flair and originality to the pages. Every issue produced sells out completely.

"Choosing Jesmond Park Academy Sixth Form was an easy decision to make."



Duke of Edinburgh

Jesmond Park Academy Sixth Form students have the opportunity to complete the Gold level Duke of Edinburgh's Award.

You achieve your Award by completing a personal programme of activities in five sections: Volunteering, Physical, Skills, Expedition and a Residential.

You'll find yourself helping people or the community, getting fitter, developing skills, going on an expedition and taking part in a residential activity. You choose your programme and along the way you'll pick up experiences, friends and talents that will stay with you for the rest of your life.



Get involved



Sixth Form Mentoring Programme

Every year we invite our Sixth Form students to support students in lower school. They may help out in lessons once or twice a week or work with individual students who need extra support with their literacy.

We also run a service which matches volunteers from Sixth Form with younger students who have English as an additional language. They provide an invaluable service, supporting vulnerable students and helping them to settle into the school and access the curriculum. All of our Sixth Form Mentors are fully trained and receive support and guidance whilst participating in the scheme.

“As you grow older you will discover that you have two hands, one for helping yourself, the other for helping others.”

Audrey Hepburn (Actress and UNICEF Goodwill Ambassador)



Year 13 Leavers' Group

The leavers' group is instrumental in organising the final events for students towards the end of Year 13.

The group work tremendously hard on the leavers' yearbook and hoodies, which proves to be a great success year on year. The leavers' group is also involved in the organisation and planning of the Summer Ball.

“Whatever you want to do after Sixth Form, Jesmond Park Academy is the perfect launch pad”



Vinnie's

For several years, Sixth Form students at Jesmond Park Academy have volunteered their time at Vinnie's, a community centre in Newcastle. Vinnie's works with refugees and asylum seekers as well as the homeless and those who need support within our community. As part of their Enrichment Programme, students work in the centre helping to organise donations, help run events and participate in 'homework club' with children who need extra support. In addition, students organise fundraisers on a regular basis to help support the work done at Vinnie's as well as local homeless charity, Streetworx.

Credera Academy

Each year a group of our Year 12 students will sign up for the Credera Academy. Credera is a global technology consulting firm with deep technology expertise that helps leading brands, including Google, Toyota and BBC unlock extraordinary results. Students selected for the Academy will join in workshops with Credera staff and learn all about consulting, find out more about employability skills and work on a real-life case study! Students will also get the opportunity to visit Credera's Newcastle office to experience what it's like to work at a huge international company, with offices all around the world.

West End Women and Girls Centre

Every year West End Women and Girls Centre come into school to work with young women in our Sixth Form. They train them as Domestic Abuse Peer Educators so that they can support others within our school. West End Women and Girls Centre is the first and only open access, community-based women and girls centre in Newcastle. They aim to build the power of women and girls who have been and continue to be disenfranchised. They seek to drive positive change in the world, our community, and in women and girls' lives, and every year our students enthusiastically work with them to make a difference to the world around them.

Enrichment Programme

At Jesmond Park Academy we take a great deal of time to ensure that we're developing real, individual students, and we are proud of our enrichment programme which covers a huge range of activities, in and out of school and also internationally.

We encourage all of our students to participate in our enrichment programme that can include building up hours from a combination of sport, charity projects, contributions to school life, mentoring and volunteering.

We offer great opportunities to work within our community basis as well as provide specific work experience through participation in MedLink and the Reece Scholarship. All of the fantastic opportunities on offer to our students aim to develop skills in leadership, communication, teamwork and decision making.

Celebrating Success

Our students make their mark in many different areas. For some it is in sport, performing arts, community work, charity fundraising or volunteering. For others it is academic success or sustained excellence.

We feel it's important to reward students for their hard work throughout the year. We celebrate success through whole school awards evenings and special assemblies, as well as Sixth Form Tutors' awards and curriculum celebrations. We have Star of the Week awards for the most valuable members of our community, and reward good attendance termly with 'choc and pop' - always a popular prize!



jesmondparkacademy.org.uk/sixthform

"We aim to celebrate lots more success over the coming year!"

Creating Futures

Whether it's higher education, vocational training or stepping straight into the workplace, at Jesmond Park Academy Sixth Form, we are committed to creating futures that matter:

- University pathways
- Apprenticeships & careers with leading employer
- Friendships for Life
- Skills For Life



"It's our students' achievements that demonstrate our success. We are very proud of each and every one of them."



Student Destinations

In 2025 our students once again outperformed many in the UK. Close to 7 out of 10 Jesmond Park Academy Sixth Form students took up university or college places, with the remainder going on to employment.

Our students win places at the best universities in the world including Oxford, Cambridge or Imperial College. Many of our students go to Russell Group universities – 24 leading research intensive institutions across the country. We are delighted with the continued success our students enjoy.



In recent years our students have gone on to study a variety of degrees including:

- Veterinary Science
- Economics
- Speech & Language Therapy
- Anthropology
- Fashion Marketing
- Medicine
- Dentistry
- Nursing
- Pharmacy
- Computer Science
- Fine Art
- Philosophy
- Film & TV Production
- Media
- Journalism
- Finance
- Music
- Modern Foreign Languages
- Biomedical Sciences
- Engineering
- English Literature
- English Language
- Business Management
- Law
- Geography
- Sociology
- Maths
- IT
- Accounting
- Sports Science
- Psychology
- Architecture
- Primary Education
- Chemistry



Contact Us

To book a tour or to discuss your options.



jesmondparkacademy.org.uk/sixthform 0191 281 8486 sixthform@jesmondparkacademy.org.uk

Comprehensive Choices

We offer a great choice of A Level and BTEC options to ensure we can accommodate all student abilities and most course/subject combinations and lead them onto their chosen progression routes.

Our Bridging Courses, held in June 2026, are designed to give you a taster of your chosen subjects, so you can be confident you have made the right choice and will enjoy your time in our Sixth Form. You can view our course entry requirements on page 59.

A Levels

You will choose three A Levels to study across a two year period, leading up to final examination assessment.

There is no coursework for most subjects and this won't count towards your A Level. AS level exams are no longer available. It is all about what you achieve at the end of the two years. Only students who have an average grade 8 or 9 at GCSE, or those doing Further Maths, may be allowed to take four A Levels.

Please note that to study any A Level subject you need to have at least grade 4s in a minimum of four GCSE subjects.

BTEC Level 3

In addition to, or as an alternative to A Level courses, students can select from a range of BTEC subjects that are either academically or vocationally focussed.

We offer BTEC courses in Level 3 Business, IT, Creative Digital Media Production, Health and Social Care, Sport and Exercise Science and Applied Science.

“The Sixth Form Team and my teacher have all helped me to improve my confidence in lessons and encouraged me to believe in myself.”

Find Your Course

A Level		Physics	44
Art and Design	20	Physical Education	45-46
Business	21	Politics	47
Biology	22	Psychology	48-49
Chemistry	23	Sociology	50
Computing	24	BTEC	
Dance	25	Pearson Level 3 Alternative Academic Qualification BTEC National in Health and Social Care (Extended Certificate)	51
Design & Technology	26	Pearson Level 3 Alternative Academic Qualification BTEC National in Applied Science (Extended Certificate)	52
Drama & Theatre Studies	27	Pearson BTEC Level 3 National Extended Certificate in Business	53
Economics	28	Pearson BTEC Level 3 National Extended Certificate in Creative Digital Media Production	54
English Language	29	Pearson Level 3 Alternative Academic Qualification BTEC National in Information Technology (Extended Certificate)	55
English Literature	30	The Extended Project Qualification (EPQ)	57
English Language & Literature	31		
Film Studies	32		
Geography	33		
History	34		
Mandarin	35		
Mathematics	36		
Further Mathematics	37		
Media Studies	38-39		
Modern Languages – French & Spanish	40-41		
Music	42-43		

Please note that all courses are dependent upon sufficient and viable student numbers.

Art & Design

GCE A Level

Entry Requirements

Students should have achieved at least a grade 4 in GCSE Art. Students will be expected to complete a bridging course/sample portfolio to discuss with staff before enrolment.

Course Details

Awarding Body: AQA

Contact: Mrs C. Stephen

Course Number: 7202/C7202/X

Art and Design Advanced Level is a pre-university recognised subject which is designed to complement a wide range of other advanced courses, as well as provide a basis for a career in Art and Design.

Entry options

A2 entry will consist of a practical coursework element and an exam element. This is a 2 year course.

What kind of student is this course suitable for?

If you are the kind of student who likes to take responsibility for your own learning, likes a challenge and is willing to listen to and act upon advice then this is the subject for you. You will need to be able to work independently, you will be passionate about Art and prepared to show a commitment beyond the timetabled curriculum.

What could this course lead on to?

This course could lead to a Foundation in Art and Design followed by a degree in a chosen specialised area e.g. Print Making, Fashion Design, Fine Art or Product Design. The course will also complement a wide range of curriculum subjects.



Course Key Features

- The Advanced course will provide opportunities for students to promote academic enquiry alongside practical activity
- Students will be given the opportunity within the units of work to experience working outdoors, visiting galleries and working with professional artists
- A wide range of crafts/materials will be available to students e.g. print making, ceramics, sculpture and mixed media. Students on this course will produce a portfolio of work which includes a major outcome
- They will complete a formal essay, and they will prepare their own final exhibition

Course Key Features

The new Business A Level is assessed by external exams which make up 100% of the assessment. The assessments include multi choice questions, data response questions and short essays. As well as the written aspect there will also be some mathematical content, analysing an organisation's finances.

The Business A Level covers a range of topics including:

- Management, leadership and decision making
- Decision making to improve marketing performance
- Decision making to improve operational performance
- Decision making to improve financial performance
- Decision making to improve human resource performance
- Analysing the strategic position of a business
- Managing strategic change

Business

GCE A Level

Entry Requirements

Grade 5 in English Language, grade 4 in Maths and if taken, a L2M in Tech Award Enterprise or a grade 5 in GCSE Business.

Course Details

Awarding Body: AQA

Contact: Mrs A. Tovey

Course Number: 2130

Business is well suited to those students who would like to gain an academic qualification relating to the world of business using business models, theories and techniques.

It will interest those who want to know more about business events and issues which dominate the news. You will study key contemporary developments in the business sector as well as thinking critically about issues and make informed decisions – all skills that are needed for further study and employment.

What kind of student is this course suitable for?

This course is suitable for students who want to achieve an academic qualification with a broad background in business. The course has a number of links with economics and finance. You need to be self-motivated, able to work independently and have a passion for business.

What could this course lead on to?

This course can lead onto a variety of academic Business qualifications in higher education and a range of employment and training opportunities.

Biology

GCE A Level

Entry Requirements

In order to ensure that students have the necessary depth of understanding and essential knowledge and skills to be successful in A Level Biology, the entry requirements are a minimum of two 6 grades achieved in two of the following GCSE Sciences:

- GCSE Combined Science: Trilogy
- Separate sciences (Biology, Chemistry or Physics)

Students must also have GCSE Maths to at least grade 6 in the Higher paper, and also Grade 5 in English Language GCSE.

Course Details

Awarding Body: AQA

Contact: Mr J. P. Bradley

Course Number: A2 7402

Biology is the study of life: how organisms interact with one another, how living things function and how they change over time. The work of biologists is to increase our understanding about the world around us and to help us address issues of personal wellbeing and worldwide concern such as environmental depletion, threats to human health and maintaining viable and abundant food supplies.

Studying Biology teaches us to analyse evidence critically, question and make observations of what we see around us, as well as to try to solve problems.

What kind of student is this course suitable for?

Biology is one of the most popular A Level subjects at Jesmond Park Academy, attracting a wide range of students. Many of the students enjoy the course so much that they eventually choose a biologically related degree course. Others go on to careers in law, computing, medicine, accounting or teaching. Whatever field you eventually work in, you will find Biology a very rewarding and challenging course which will develop many of the skills essential for a successful career.

Course Key Features

The GCE A Level course has been developed to follow directly on from the 'double' and 'triple' GCSE Science courses. Biology is a popular course and is widely regarded as a good entry qualification for most university courses. The course includes a number of practical sessions, designed to develop the skills necessary for progression onto science related university courses and more importantly for your development as a scientist.

Below is a list of some of the content to be covered over the 2 year course:

- How living organisms, including plants, animals and microorganisms, interact with each other and the non-living world
- How the living world can be studied at population, organism, cell and molecular levels
- The fundamental similarities as well as differences between plants, animals and microorganisms
- Biodiversity
- Exchange and transport
- Cells
- Biological molecules
- Ecosystems
- Control systems
- Genetics and evolution
- Energy for biological processes

What could this course lead on to?

Biology is a useful science to study in that it has a vast subject breadth as well as depth and allows the student to pursue a range of specialities including Zoology, Botany, Medicine, Microbiology, Ecology, Pharmacy, Genetics, Food Technology, Physiology, Optometry and Nursing. Careers that develop from this field are immense, popular and very rewarding. Most medical degree courses require Biology as a compulsory element for course entry. Some students have even used their A Level Biology as a stepping stone to cutting edge degree courses e.g. Stem Cell Research and Genome Sequencing.

Course Key Features

The GCE A Level course has been developed to follow directly on from the double and triple GCSE Science courses. Chemistry is popular and is widely regarded as a good entry qualification for most university courses. The course includes a high proportion of practical activities, such as quantitative analysis by titration and various organic synthesis experiments. There are regular practical sessions with marks awarded towards the final grade. The aim is to develop the skills necessary for the investigative skill component of the course and more importantly for your development as a chemist.

Below is a list of some of the content to be covered over the 2 year course:

- Formulae, equations and amounts of substance
- Atomic structure
- Bonding and structure
- Kinetics
- Equilibria
- Redox
- Inorganic chemistry and the periodic table
- Organic chemistry
- Modern analytical techniques

What could this course lead on to?

There are a wide range of Chemistry based degree courses available and Chemistry A Level offers entry to many non-science degrees. Most medical degrees have A Level Chemistry as a compulsory requirement for course entry. There are many chemical industries in the North East which take good A Level students as trainees offering day release to study up to degree level and beyond. Details about careers in Chemistry can be found at the Royal Society of Chemistry careers service at www.rsc.org.uk.

Chemistry

GCE A Level

Entry Requirements

In order to ensure that students have the necessary depth of understanding and essential knowledge and skills to be successful in A Level Biology, the entry requirements are a minimum of two 6 grades achieved in two of the following GCSE Sciences:

- GCSE Combined Science: Trilogy
- Separate sciences (Biology, Chemistry or Physics)

Students must also have GCSE Maths to at least grade 6 in the Higher paper, and also Grade 5 in English Language GCSE.

Course Details

Awarding Body: AQA

Contact: Mrs C. Money

Course Number: A2 7405

Chemistry is the central science; it has interactions with biological, medicinal, physical and earth sciences. The course studies the structure of molecules, their properties, synthesis and how they interact with each other to create new substances. Its range is enormous, from the simplest compounds like methane and sodium chloride to complex biological structures such as DNA and haemoglobin, which form the basis for life itself.

More information about Chemistry can be found at the Royal Society of Chemistry website at www.rsc.org.

What kind of student is this course suitable for?

The course is varied, challenging and very rewarding. Chemistry combines well with many A Level courses especially the other sciences. It helps students to develop numerical, practical and literacy skills as well as the ability to deal with abstract concepts such as atoms and their interactions.

Computing

GCE A Level

Entry Requirements

Entry requirements Maths grade 5 and English Language grade 5. Students who have completed GCSE Computing must have a grade 5.

Course Details

Awarding Body: AQA

Contact: Mr J. Thornton

Course Number: A Level: 7517

This new course has been designed to encourage students to look at current technologies and perceived advances in both hardware and software. It offers a broad understanding of computing and the practicalities it has in industry today.

The A Level topics focus on programming and the theoretical aspects of Computer Science. Students will gain knowledge of the fundamental principles of computing. They'll study a variety of programming languages, problem solving, data structures, the development of software, theory of computation, representation of data, computer architecture, communication and networking and the consequences of computing.

Course Key Features

- Develop an understanding of the main principles of solving problems using computers
- Develop an understanding of the range of applications of computers and the effects of their use
- Prepare students who wish to go on to higher education courses or employment where a knowledge of Computing would be beneficial
- Develop an understanding of the organisation of computer systems including software, data, hardware, communications and people
- Develop an understanding of the main principles of systems analysis and design, methods of problem formulation and planning of solutions using computers
- Develop their capacity for critical thinking and perceive their field of study in a broader perspective
- Develop their project management skills and team work skills



There are three units at A Level.

Paper 1 tests a student's ability to program by writing and adapting programs as well as testing the theoretical knowledge of Computer Science in an on screen examination. (40% of A Level - 2hr 30mins)

Paper 2 is a traditional written paper with some extended questions to stretch and challenge. (40% of A Level - 2hr 30mins)

The non-exam assessment assesses the ability to use the knowledge and skills gained through the course to solve a practical programming problem. (20% of A Level)

What kind of student is this course suitable for?

Students should have a keen interest in computing and may be thinking of a career linked to this industry. This A Level works well with Sciences and Maths. They should be well motivated and keen to learn a new subject.

What could this lead to?

This course is designed to provide a progression route to higher education. It is particularly useful for those considering a career in computing, engineering and science, or studying a related subject at university.



Course Key Features

Advanced GCE Dance (2 year course)

Component 1: Performance & Choreography (50% of A Level)

- Solo performance linked to a specified practitioner within an area of study
- Performance in a quartet
- Group choreography

Component 2: Critical engagement (50% of A Level)

Written exam: 2 hrs 30 min

- Knowledge, understanding and critical appreciation of two set works
- One compulsory set work within the compulsory area of study
- One optional set work within the corresponding area of study, from a choice of four

What could this course lead on to?

Dance training at this level provides students with many skills that are looked fondly upon by universities.

This course focuses on performance as well as choreography therefore making it a great option if you want to study or work in any area of the arts. The course also complements subjects within Physical Education and prepares those wishing to develop further skills in performance for the audition process.

Dance

GCE AS/A Level

Entry Requirements

It is essential that all students opting to take the course have achieved a grade 4 in GCSE English Language as the course has a high demand for a good standard of written work.

A willingness to work hard and an enthusiasm to develop performance skills is essential.

Course Details

Awarding Body: AQA

Contact: Mrs McGrath

Course Number: 7237

A Level Dance is a dynamic qualification which encourages students to develop their creative and intellectual capacity, alongside transferable skills such as team working, communication and problem solving.

All of these are sought after skills by higher education and employers and will help them stand out in the workplace whatever their choice of career. This specification reflects both historical and current dance practices and inspires a lifelong passion and appreciation for dance.

This course recognises the role of dance in young people's lives and students will be able to study a range of dance styles.

What kind of student is this course suitable for?

This course requires a student who demonstrates genuine enthusiasm for Dance and someone who is prepared to put in the extra time for practice and study outside of lessons.

Students wishing to take this course should be well organised and willing to work hard in not only a practical sense but also a theoretical sense. A willingness to participate in extra-curricular activities and whole school productions is also required.

Product Design

Entry Requirements

Students are required to have achieved a grade 4 in English Language, a grade 4 in Maths and at least a grade 5 in GCSE D&T. Students without a grade 5 at GCSE D&T will need to speak directly to the Course Leader. This creative and thought-provoking qualification gives students the practical skills, theoretical knowledge and confidence to succeed in a number of careers. Especially those in the creative industries. They will investigate historical, social, cultural, environmental and economic influences on product design, whilst enjoying opportunities to put their learning in to practice by producing products of their choice.

Course Details

Awarding Body: AQA

Contact: Ms H. McArthur

Course Number: 7552

What kind of student is this course suitable for?

The course is suited to a student who has a lively and enquiring mind and who enjoys problem solving and is prepared to undertake independent research in both, the design, marketing and manufacturing of commercial products.

What could this course lead on to?

Success in the course will open opportunities in various fields of employment and training. Progression onto higher education courses could include: Engineering, multi-disciplinary design for industry, '3D' Products Design, Graphic Design, Computer Aided Design, Multi Media Design and Furniture and Interior Design.

Course Key Features

Product Design allows for creative and innovative technological expression by providing an opportunity for students to develop their creativity, capability and entrepreneurial skills and apply knowledge and understanding to a range of technological activities in the field of the development of Product Design.

Course Key Features continued

Students will use range of CAD/CAM software including, '2D' Design, Google sketch up in the manufacturing and design, performance modelling and creation of products and prototypes.

Assessment

Paper 1: Written exam

2 hours 30 minutes: Technical principles (30% of the A Level)

Paper 2: Written exam

1 hour 30 minutes: Designing and making principles (20% of the A Level)

Non-exam assessment (NEA)

Practical application of technical principles, designing and making principles and specialist Knowledge.

Evidence: Written or digital design portfolio and photographic evidence of final prototype

- Substantial design and make task (50% of the A Level)

Areas of Study

A Level Product Design requires students to engage in both practical and theoretical study. This course requires students to cover design and technology skills and knowledge as set out below:

Technical Principles

- Materials and their applications
- The requirements for product design, development and manufacture
- Design communication
- Digital design and manufacture
- Efficient use of materials

Design and Make Principles

- Design methods and processes
- How technology and cultural changes can impact on the work of designers
- Critical analysis and evaluation
- Accuracy in design and manufacture
- How to evaluate products, taking into account the views of potential users
- Responsible design

Course Key Features

A Level Drama and Theatre will give you the opportunity to:

- Study and research a range of published plays, exploring a director's, performer's and designer's perspective
- Devise original and innovative work inspired by the work of a key drama practitioner
- Analyse and evaluate live theatre
- Regularly visit the theatre to draw inspiration for both your practical and written work

Assessment

Component 1: Devising

Devised performance from a key extract of a published play in the style of a key Theatre practitioner. Portfolio charting the process from the initial stimuli to the final performance.

(40% of the A Level)

Component 2: Scripted Performance

Two performances:

- 1) Ensemble performance of a key extract from a published play.
- 2) Monologue from a key extract of a different published play.

(20% of the A Level)

Component 3:

Theatre makers in practice

Written exam 2h 30m

Section A: Live Theatre Review.

Section B: Two extended responses on an unseen extract from a set text studied. Perspective of performer and designer.

Section C: One extended response on a set text studied from the perspective of a director.

(40% of the A Level)

Drama & Theatre Studies

GCE A Level

Entry Requirements

It is useful to have Drama at GCSE grade 4 but not essential. A willingness to work hard and be involved with performances is essential. It is important that you are interested in gaining a greater understanding of the history of theatre.

It is advisable that students opting to take the course have achieved a grade 4 in GCSE English as students will also be assessed on the quality of their written communication.

Course Details

Awarding Body: Edexcel

Contact: Miss K. Moore

Course Number: A Level: 9 DRO

A Level Drama and Theatre is a creative and thought provoking course designed to complement a wide range of other Advanced Level courses, as well as providing a basis for a career in the Performing Arts.

The course will show you the wonderful diversity in theatre. You will learn to analyse, interpret and create imaginative and inventive theatre, whilst becoming a competent practitioner.

This A Level is rigorously academic and offers a unique approach to learning, aiming to nurture your enthusiasm for and interest in theatre.

Drama & Theatre A Level complements a range of subjects and has transferable skills that can be applied to a number of careers outside the arts.

Economics

GCE A Level

Entry Requirements

Students should have at least a grade 5 in GCSE Mathematics and a grade 5 in English Language.

Course Details

Awarding Body: AQA

Contact: Mrs N. Montgomery

Course Number: A Level – 7136

Economics is a social science that is well suited to those students who would like to gain an academic qualification relating to the world of business, finance and international trade. It will interest those who want to know more about economic events which dominate the news.

What kind of student is this course suitable for?

This course is suitable for those students who do not wish to commit themselves entirely to Arts, Humanities or Science subjects. Students should be interested in Economics news and may be thinking of a career linked to a particular business or industry. They should also be well-motivated and keen to learn a new subject.

What could this course lead on to?

It is a particularly useful subject for careers in accountancy, politics, banking, financial services, business management, journalism and the civil service.

A good proportion of students continue Economics at degree level. Some students have progressed to joint degrees in subjects such as Economic History, Economic Geography and Mathematical Economics.

Course Key Features

Economics is not very mathematical at this level, but demands an ability to think clearly and logically. Students will gain knowledge of theories and methods that economists use to study the world in which we live.

A Level Economics is a very successful course with students consistently achieving excellent results. There is no best combination of subjects to take with Economics. In fact, students study a wide variety of A Levels, including Mathematics, English, History, Languages, Business Studies, Geography, Psychology and the Sciences.

Students will be expected to keep up-to-date with current economic events and occasionally help with a presentation of news items to the rest of the class. They will be shown how to access Economic data on the Internet and use Economics-related websites to improve their understanding of the subject.

As an extra-curricular activity, students have the opportunity to participate in The Student Investor Challenge – a stocks and shares investment game, as well as other Economics related competitions.

Course Key Features

Students will complete two exams at the end of Year 13, along with a piece of coursework. The exams will cover aspects of child language acquisition, language change, the construction of meanings and representations, and language varieties.

What could this course lead on to?

Students who have previously taken a course in A Level English Language have gone on to pursue university degrees in a wide range of subject areas. Furthermore, taking the subject at this level provides many different career opportunities, especially in the fields of education, the media, the law and other occupations where a higher level of competence in English is a prerequisite.

English Language

GCE A Level

Entry Requirements

Students must have a grade 5 in GCSE English Language and a grade 4 in English Literature.

Course Details

Awarding Body: AQA

Contact: Mr S. G. Taylor

Course Number: 7702 (English Language)

A Level English Language is a subject that encourages students to reflect upon the ways that language use is influenced by social, geographical and temporal contexts. Students can expect to study features of language diversity, methods of linguistic analysis and social attitudes to language use.

In addition, the full A Level course offers an opportunity to complete an independent language investigation alongside a piece of original writing. It also explores the ways that children acquire language. Students will encounter a varied range of texts and they will develop their ability to think critically and analytically.

What kind of student is this course suitable for?

The subject combines extremely well with other courses such as English Literature, History, Drama, Psychology, and Media Studies as they all focus to some extent on the ways that language can be used and understood in different contexts.

The study of English Language also complements subjects where English is the medium of instruction as students will have a greater awareness of how and why specialist texts have been written.

English Literature

GCE A Level

Entry Requirements

Students must have a grade 4 in GCSE English Language and a grade 5 in GCSE English Literature.

Course Details

Awarding Body: Edexcel

Contact: Mr S. G. Taylor

Course Number: 9ET0 (English Literature)

A Level English Literature is an analytical and investigative course. Students can expect to study literary genres, a diverse selection of prose and poetry drawn from different historical periods and they will have the opportunity to demonstrate their wider reading as part of the coursework component.

The course considers the ways that meanings are shaped in literary texts, and students are required to explore the contexts and connections that influence critical interpretation. A Level English Literature is a course that encourages open-minded reflection and careful analytical thinking and as such, it is both a challenging and rewarding subject.

What kind of student is this course suitable for?

This course is suitable for students who have a passionate commitment to reading. A broad cultural interest in art, film, theatre and history is desirable in order to develop open-minded and well-informed judgments of the texts that we read.

Students should be prepared to share their ideas about literature in discussion, and to write critical essays that reflect their own opinion in the context of the views of others.

Course Key Features

Students will sit three exams at the end of Year 13 (Drama, Prose and Poetry). In addition, they will complete a piece of coursework which will involve the comparison of two texts chosen by the student.

Students can expect to study:

- 'The Picture of Dorian Grey' by Oscar Wilde
- 'The Little Stranger' by Sarah Waters
- Poems of the Decade
- 'Othello' by William Shakespeare
- 'A Streetcar Named Desire' by Tennessee Williams
- A selection of Romantic poetry

What could this course lead on to?

This course could lead to the study of English Literature at undergraduate level. Furthermore, A Level English Literature is a highly valued course that complements the study of many other subjects such as English Language, History, Media Studies and Psychology.

English Literature lends itself to many career choices such as journalism, media, teaching, advertising and law.

English Language & Literature

GCE A Level

Entry Requirements

Students must have a grade 4 in GCSE English Language and a grade 4 in GCSE English Literature.

Course Details

Awarding Body: AQA

Contact: Mr S. G. Taylor

Course Number: 7707 (English Language & Literature)

A Level English Language and Literature offers students a full and coherent integration of literary and linguistic study. Students can expect to analyse a range of literary and non-literary texts, and, they will explore language in spoken and written contexts.

An attractive feature of the A Level course is the opportunity to complete a piece of re-creative writing using set texts as stimulus material.

As a consequence, students are encouraged to respond creatively as well as analytically to the texts that they read. The full A Level course also requires students to undertake an individual investigation into a specific theme or technique in both literary and non-literary texts. This is a course that supports students who wish to develop their ability to read both widely and critically.

Film Studies

GCE A Level

Entry Requirements

Grade 4 in English Language and grade 4 in English Literature.

Course Details

Awarding Body: WJEC/Eduqas

Contact: Mrs A. Cox

Course Number: A Level: 9 DRO

As the creative, popular and artistic medium of the 20th Century enters the second decade of the new millennium, film remains a principle source of the imaginative, social and aesthetic experiences for millions of people all over the world.

Therefore, this exciting A Level provides an opportunity for students to develop a critical insight into a highly influential form of communication and to engage with a subject in which they are already interested, offering them a focus for reflection and debate.

Initially building on the knowledge and understanding that students bring with them as spectators, consumers and fans of film, the course aims to enable students to: demonstrate knowledge and understanding of a diverse range of film; understand the significance of film and film practice in national, global and historical contexts; and appreciate film as an aesthetic art form which can generate a variety of meanings and responses.

What kind of student is this course suitable for?

Students should have a keen interest in film and cinema but no previous practical skills are required. The course enables the development of transferable skills and therefore complementary combinations with other subjects can include Sociology, Psychology, English and Media Studies. However, the subject tends to attract students from a variety of disciplines.

Course Key Features

The course initially looks at how meaning is created through elements of film form, such as mise-en-scene, cinematography, editing and sound. Students will then move on to complete three components over the two years of the course.

Component 1: Varieties of Film and Filmmaking will be examined by a written examination of 2 1/2 hours (35% of total course mark).

It includes the study of the following:

- Two Hollywood films made between 1930 and 1990
- Two American films (one mainstream and one independent) made since 2005
- Two British films made since 1995

Component 2: Global Film making Perspectives will be examined by a written examination of 2 1/2 hours (35% of total course mark).

It includes the study of the following:

- Two 'global' films: one European and one produced outside of Europe
- A documentary film
- One pre-sound film
- One experimental film made between 1960 and 2000

Component 3: Production is the coursework module and involves students producing a short film or a screenplay plus an evaluative analysis. (30% of total course mark)

What could this course lead on to?

Past students have gone on to study a range of courses at top universities, including film and/or television studies, media production, scriptwriting, communications, teaching, and other related fields. A number of our ex-students have also become filmmakers.

Course Key Features

Coastal Landscape systems, Changing Spaces; Making Places and Disease Dilemmas.

Earth's Life Support Systems, Hazardous Earth, and Global Connections (Migration and Human Rights).

At the end of Year 13 students will sit three written exam papers:

- Physical Systems – 1 hour 30 minute written paper (22% of total A Level)
- Human Interactions – 1 hour 30 minute written paper (22% of total A Level)
- Geographical Debates – 2 hour 30 minute written paper (36% of total A Level)

Non Examined Assessment worth 20% of the A Level.

What could this course lead on to?

Geography is a popular option at A Level, and many who study it also go on to study it in some form at university.

The skills developed during the course enable students to move into a wide range of occupations, including marketing and town planning. Geography graduates are highly employable and many now specialise in growth areas such as environmental and transport management.

Geography

GCE A Level

Entry Requirements

Grade 4 in English Language and grade 4 in Geography.

Course Details

Awarding Body: OCR C

Contact: Miss A. Ellitson

Course Number: A2: H481

In the first year of the A Level course students will study the physical components of Landscape Systems and the human component of Changing Places, Making Spaces. In addition, students will also study Disease Dilemmas as part of the Geographical Debates component.

In the second year of the A Level course students will investigate the topic of Earth's Life Support Systems and will continue with their work on the Geographical debates component, investigating the topic of Hazardous Earth. Students will also explore the issues associated with Global Migration and Human Rights.

Throughout the A Level, there is a requirement to undertake four days of field study. This will help to build upon knowledge developed in lessons and will support students with the development and completion of their NEA (Non Examined Assessment).

What kind of student is this course suitable for?

Geography combines well with many other subject areas, but has particularly strong links with Economics, Biology and History. Many students choose to study Geography as it complements their knowledge in Maths and English.

History

GCE A Level

Entry Requirements

To study the GCE in History and make a really positive start to A Level History ensure that you have studied GCSE History and achieved at least a grade 5 at GCSE. It would be equally beneficial if you achieve a grade 5 in GCSE English Language.

Course Details

Awarding Body: Edexcel

Contact: Mr M. Ronan

Course Number: A Level: 9HI 0

The GCE A Level in History builds on the skills developed at GCSE, such as the communication of historical knowledge and the ability to analyse historical sources. It is a demanding course, which requires lots of independent learning.

Course Key Features

A Level Specification: Pearson Edexcel Level 3 Advanced GCE in History (9HI0) Route E: Communist States in the Twentieth Century.

Paper 1 Russia 1917–91:

From Lenin to Yeltsin.

Breadth and depth studies with interpretations. 30% A Level.

Paper 1 covers the whole history of communist rule in Russia and the Soviet Union, from the Bolshevik seizure of power in November 1917 to the collapse of communist rule and the break-up of the Soviet Union in 1991.

Examination:

Section A: One essay from choice of two.

Section B: One essay from choice of two.

Section C: One compulsory source-based question, based on two extracts.

Paper 2, Option 2E.2:

The German Democratic Republic, 1949–90. Depth Study. 20% A Level.

This topic covers the history of a very unusual central European state, the communist German Democratic Republic (GDR), which existed in the years 1949 to 1990.

Examination:

Section A: One compulsory source-based question, based on two sources.

Section B: One essay from choice of two.

Paper 3, Option 34.2:

Poverty, public health and the state in Britain, c1780–1939.

Themes in breadth with aspects in depth. 30% A Level.

This option gives students the opportunity to explore two of the major social problems that arose from industrialisation and urbanisation: poverty and public health, and the ways in which the state gradually took control of the situation, involving a considerable change in attitudes amongst the general public.

Examination:

Section A: One compulsory question, based on a source.

Section B: One essay from choice of two.

Section C: One essay from choice of two.

Paper 4 Coursework assignment

Independently researched enquiry. 20% of A Level.

Students carry out an independently researched enquiry to analyse and evaluate interpretations, and organise and communicate their findings.

Course Key Features

The course places great emphasis on active language use, by developing speaking and writing skills, as well as furthering your understanding of spoken and written language. All language is learnt and practised within the context of topics from contemporary life. In addition you will develop research skills within a cultural topic of relevance to the Chinese-speaking world. The course will provide you with proficiency in Mandarin Chinese, but will also develop other skills such as an ability to work with others, communication and listening skills and an ability to analyse.

Course Specification

The topic areas studied are as follows:

Changes in Contemporary Chinese Society

- Family
- Education and Work

Chinese Culture

- Traditions, Festivals and Customs
- Television, Film and Literature

Evolution of Chinese Society

- Communications and Technology
- Economic Developments
- Environmental Protection

Effects of Reform and 'Opening Up' in 1978

- The Wealth Gap
- Megacities
- China-UK Relations

Style of assessment:

A Level Paper 1:

Listening, reading and writing
40% of A Level.

A Level Paper 2:

Written response to works
30% of A Level.

A Level Paper 3:

Speaking 30% of A Level.

Mandarin

GCE A Level

Entry Requirements

A minimum of a GCSE grade 6 in Chinese (Spoken Mandarin) and an APS of 6.0.

This course can only be selected as a 4th option alongside 3 other courses.

Course Details

Awarding Body: Edexcel

Contact: Ms J. Chia / Ms A. Gao

Course Number: 9CNO

If you are interested in languages and communications and you enjoy learning about the cultures and life in other countries, and take a keen interest current events and global issues which affect young people in society in the Chinese speaking world, then a course in Mandarin Chinese could be for you.

What kind of student is this course suitable for?

You will need to feel confident in the four language skills of listening, reading, speaking and writing, as well as having some understanding of the culture and way of life of Mandarin speaking countries. We would expect you to be prepared to study independently and to spend time over and above that allocated to lessons and homework to improve your language skills.

What could this course lead on to?

When you finish the course, you will find languages useful in many spheres of life. You can continue to study Mandarin Chinese, perhaps in conjunction with another subject. There are many combinations, for example with Business, Law, International Relations, Asian Studies, Science, and Tourism or, of course, a purely language based course.

Mathematics

GCE A Level

Entry Requirements

Grade 7 in GCSE Maths

Course Details

Awarding Body: Edexcel

Contact: Mr J. Thornton

Course Number: 9371

What interests should I have if I want to follow this course?

To enrol for A Level Mathematics you must have at least a Grade 7 for GCSE Mathematics. However, that alone won't guarantee success. You should have an enquiring mind and enjoy problem solving. A Level Mathematics is an extremely rewarding subject; you have to be fully committed and willing to work extremely hard. Successful students at A Level are prepared to persevere and work independently. If you are also likely to study subjects such as Science, Geography and Psychology, which have a mathematical content, then studying A Level mathematics could well be advantageous.

What teaching and learning methods will be used?

The approach is mainly through solving problems in class and at home interspersed with teacher-led sessions and class discussions. In addition you will be set revision questions which will be a key element of your success in internal assessments throughout the course.

What can I do when I complete my qualifications?

Many career opportunities open up for someone with an A Level in Mathematics. It is such a powerful subject; employers are always looking for people with good numerical and problem solving skills. Fields include business, financial services, sciences, engineering, data analysis, and medicine to name a few. Study of A Level Maths leads naturally to starting degrees in any mathematically based subject.

Course Key Features

What will I learn about?

You will cover three areas of Mathematics during the course: Pure Mathematics, Statistics and Mechanics.

- Pure topics deal mainly with the manipulation of algebraic functions, solving equations, rearranging formulae and looking further into topics from GCSE such as trigonometry and geometry
- Statistics topics deal with the handling and analysing of data in a variety of forms, distribution of data probability, correlation and regression
- Mechanics topics deals with kinematics, forces and Newton's laws, moments and vectors

Pure Mathematics - Year 1

Proof, Algebra and Functions, Coordinate Geometry, Sequences and Series, Trigonometry, Exponential and Logarithms, Differentiation, Integration and Vectors.

Statistics & Mechanics - Year 1

Statistical Sampling, Data Presentation and Interpretation, Probability, Statistical Distribution, Hypothesis Testing, Kinematics, Forces and Newton's Laws.

Pure Mathematics - Year 2

All of the key topics that were taught in Year 12 with extended understanding and additionally Numerical Methods.

Statistics & Mechanics - Year 2

All of the key topics that were taught in Year 12 with extended understanding and additionally Moments.

How will I be assessed?

Pure Mathematics 1

Structured questions covering all pure content from year 1 and year 2.
Time – 2 hours (33.3% of A Level Grade)

Pure Mathematics 2

Structured questions covering all pure content from year 1 and year 2.
Time – 2 hours (33.3% of A Level Grade)

Statistics and Mechanics

Structured questions covering all applied content from year 1 and year 2. Section A (Statistics) and Section B (Mechanics)
Time – 2 hours (33.3% of A Level Grade)

Course Key Features

What will I learn about?

You will cover three areas of Mathematics during the course: Core Pure Mathematics, Further Pure Mathematics and Decision Mathematics.

Core Pure Mathematics 1

Proof, Complex Numbers, Matrices, Further Algebra and Functions, Further Calculus, Vectors

Core Pure Mathematics 2

Proof, Complex Numbers, Matrices, Further Algebra and Functions, Further Calculus, Vectors

Further Pure Mathematics 1

Further Vectors, Conic Sections, Series, Further Calculus Methods, Further Trigonometry

Decision Mathematics 1

Graphs and Networks, Algorithms, algorithms on graphs, Linear Programming, Critical Path Analysis

How will I be assessed?

Core Pure Mathematics 1

Structured questions covering all pure content from year 1 or year 2.
Time – 1.5 hours
(25% of A Level Grade)

Core Pure Mathematics 2

Structured questions covering all pure content from year 1 or year 2.
Time – 1.5 hours
(25% of A Level Grade)

Further Pure Mathematics 1

Time – 1.5 hours
(25% of A Level Grade)

Decision Mathematics 1

Time – 1.5 hours
(25% of A Level Grade)

Additional Information

Further Mathematics is timetabled separately to A Level Mathematics. This means A Level Maths will be chosen in one block and Further Maths in another. Please note that Further Maths can only be taken as a fourth A Level.

Further Mathematics

GCE A Level

Entry Requirements

Grade 8 in GCSE Maths

Course Details

Awarding Body: Edexcel

Contact: Mr J. Thornton

Course Number: A - 9372

What interests should I have if I want to follow this course?

Further Mathematics is an excellent choice for those students who believe that they will want to study a Mathematics related course after they leave school. It doesn't only appeal to these types of students, some students study Further Mathematics because they just enjoy Maths, find it extremely rewarding and the skills developed complements A Level Mathematics.

By taking this course you will:

- Deepen your knowledge and understanding of Maths generally
- Be able to study a wider range of topics
- Further develop your problem solving and analytical skills
- Increase your success at university in Maths based subjects like Engineering, Computer Science, Economics, Physics and Mathematics.

What can I do when I complete my qualifications?

Mathematics A Level with either AS Level Further Mathematics or A Level Further Mathematics demonstrates a breadth of understanding in a variety of topics which lends itself to further study.

Degree courses with high mathematical content such as engineering, mathematics, statistics, computing would all benefit for studies at this level. Some students wish to study Further Mathematics without any particular course in mind because of its versatility.

Media Studies

GCE A Level

Entry Requirements

Students must have achieved a minimum of grade 4 in GCSE English Language.

Course Details

Awarding Body: WJEC / Eduqas

Contact: Mrs A. Cox

Course Number: 3291

The media play a central role in contemporary culture, society and politics. They shape our perceptions of the world through the representations, ideas and points of view they offer.

The media have real relevance and importance in our lives today, providing us with ways to communicate, with forms of cultural expression and the ability to participate in key aspects of society.

The economic importance of the media is also unquestionable. The media industries employ large numbers of people worldwide and generate significant global profit.

Course Key Features

The A Level specification offers students the opportunity to develop an informed understanding of key issues surrounding the media, using a comprehensive theoretical framework and key theories to support critical exploration, analysis and debate.

Although the primary emphasis is on the contemporary media, students will explore how the products relate to their wider historical contexts.

The study of a range of rich and stimulating media products is central to the specification, working from the product outwards to debate key critical questions related to the social, cultural, political and economic role of the media.

There are three components:
There are two distinct examination components at A Level – 70%.
There is also a production component – 30%.

Component 1: Analysing Media Language and Representation

This component introduces students to the knowledge, understanding and skills required to analyse media products through the study of key areas of the theoretical framework – media language, representation, media industries and audiences.

Students study the theoretical framework in relation to set products from the following forms:

- Music video
- Film
- Video games
- Advertising and marketing
- Newspapers
- Radio

In this component, learners explore and analyse how media products construct meanings and representations as well as considering how they are influenced by social, cultural, historical and industry (including economic and political) contexts. Relevant theoretical approaches and theories are also studied.

Component 2: Media Forms and Products in Depth

In this component, students build on the knowledge and understanding developed in Component 1.

Learners engage in an in depth study of media language, representation, media industries and audiences in relation to:

Section A: TV in the Global Age

Section B: Magazines – Mainstream and Alternative Media

Section C: Media in the Online Age

Media Cross Production

Learners create an individual cross-media media production in more than one form. The forms that students can work in include television, magazine, film marketing, music marketing and online options.

Media Studies students enjoy the benefits of a purpose built suite including a studio and editing facilities. Students are also given the opportunity to engage with the media outside of the curriculum to develop their experiences in the 'real world' of the media.

In the past, this has included work experience, entry in film competitions and involvement in outside projects with agencies including Northumbria and Teesside Universities.

A Level Media Studies at Jesmond Park Academy is a popular subject chosen by a wide range of students including those who want to follow a career in the media and those who want to experience a different kind of course which complements their other options.

What kind of student is this course suitable for?

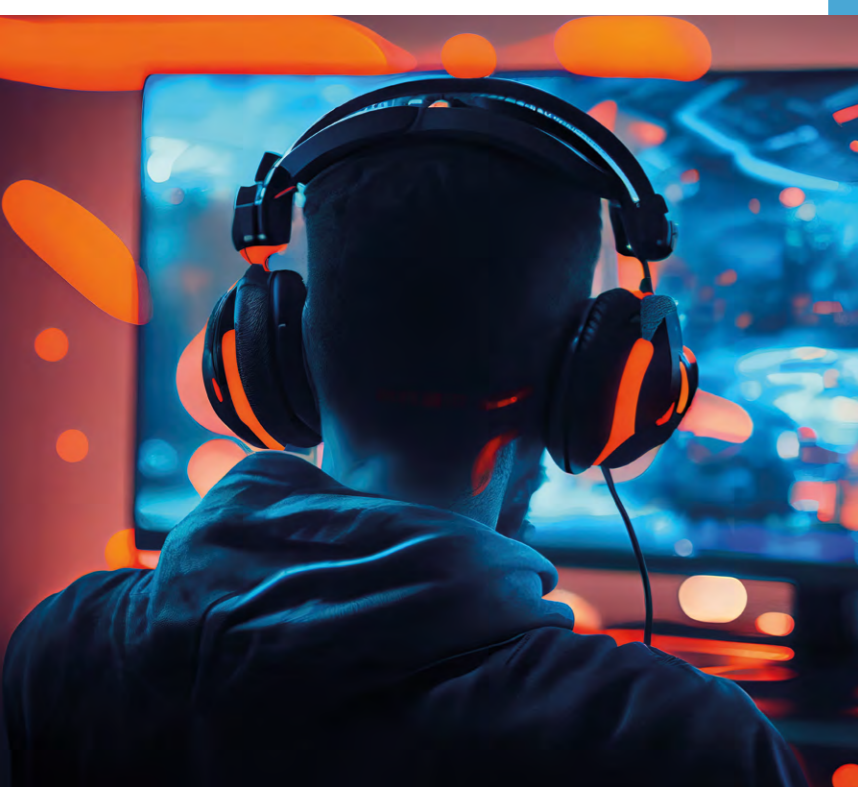
This course is suitable for students who have an interest in the media and who are prepared to engage with the media on all levels.

Students must be prepared to keep up to date with developments in the media by engaging in background reading, watching and listening. Students should also be prepared to engage in discussion about media issues and be ready to offer ideas and opinions.

The course has creative and analytical aspects and students must be ready to be involved on both these levels.

What could this course lead on to?

This course could lead onto a degree in a range of media related areas including television and radio production, journalism, advertising, communications and public relations. Furthermore, this course complements other subjects such as English Language, Sociology and Psychology.



Modern Languages - French & Spanish

GCE A Level

Entry Requirements

A minimum of a grade 5 at GCSE in the language you wish to study would indicate a good base from which to study a language in Sixth Form.

Course Details

FRENCH

Awarding Body: AQA

Contact: Mr G. Hall

Course Number: 7652

SPANISH

Awarding Body: AQA

Contact: Mr G. Hall

Course Number: 7692

If you are interested in languages and communications and you enjoy learning about other cultures and ways of life, then a course in French or Spanish could be suitable for you.

Similarly if you are interested in the business world, in travel or tourism, in literature, in the media, or in science, you are also likely to find the course appropriate.

Course Key Features

The course places great emphasis on active language use, by developing speaking and writing skills, as well as furthering your understanding of spoken and written language. All language is learnt and practised within the context of topics from contemporary life. In addition you will develop research skills within a cultural topic of relevance to the languages studied.



Course Specification – AQA French

The topic areas studied are as follows:

- Aspects of French-speaking society: current trends
- Aspects of French-speaking society: current issues
- Artistic culture in the French-speaking world
- Aspects of political life in the French-speaking world

Style of assessment:

A Level Paper 1:

Listening, reading and writing
50% of A Level.

A Level Paper 2:

Written response to works
20% of A Level.

A Level Paper 3:

Speaking 30% of A Level.

Course Specification – AQA Spanish

The topic areas studied are as follows:

Aspects of Spanish Society: Modern and Traditional values, Cyberspace, Equal Rights. Artistic Culture in the Spanish Society: Modern day idols, Spanish regional identity, Cultural heritage. Multiculturalism in Spanish Society: Immigration, Racism and Integration. Political Life in Spanish Society: Today's youth, tomorrow's citizens, Monarchies and Dictatorships, Popular movements

Style of assessment:

A Level Paper 1:

Listening, reading and writing
50% of A Level

A Level Paper 2:

Written 20% of A Level

A Level Paper 3:

Speaking 30% of A Level

The language courses will continue to provide you with proficiency in French or Spanish, but will also develop other skills such as an ability to work with others, communication and listening skills and an ability to analyse. You will also be given the opportunity to spend some time abroad if you wish.

What kind of student is this course suitable for?

You will need to feel confident in the four language skills of listening, reading, speaking and writing, as well as having some understanding of the culture and way of life of French or Spanish speaking countries.

We would expect you to be prepared to study independently and to spend time over and above that allocated to lessons and homework to improve your language skills.

What could this course lead on to?

When you finish the course, you will find languages useful in many spheres of life. You can continue to study French or Spanish, perhaps in conjunction with another subject.

There are many combinations, for example French or Spanish with Business Studies, Law, Chemistry, Tourism or, of course, a purely language based course.

Music

GCE A Level

Entry Requirements

Students must have achieved a minimum of a grade 5 in GCSE Music plus a grade 4 in an associated board practical examination or equivalent.

Course Details

Awarding Body: Edexcel

Contact: Mrs J. Robinson

Course Number: 9MUO

In the words of Albert Einstein:
“The greatest scientists are artists as well”.

Music will help you build your problem solving, research, planning, analytical and critical thinking skills, as well as develop your creativity. Employers are looking for multi-dimensional workers with the sort of flexible and supple intellects that studying music can bring.

Key Skills covered through the course:

- Interpret musical ideas through performing, with technical and expressive control and an understanding of style and context
- Create and develop musical ideas with technical and expressive control and coherence
- Demonstrate and apply musical knowledge
- Use analytical and appraising skills to make evaluative and critical judgements about music



Course Key Features

Advanced GCE Music
(2 year course)

Component 1: Performing (30% of A Level)

- A public performance of one or more pieces, performed as a recital
- Performance can be playing or singing solo, in an ensemble, improvising, or realising music using music technology

Component 2: Composing (30% of A Level)

- A total of two compositions, one to a brief set by Pearson and one either free composition or also to a brief

- One composition must be from either a list of briefs related to the areas of study, or a free composition
- One composition must be from a list of briefs assessing compositional technique

Component 3: Appraising (40% of AS Level)

- One written paper of 2hrs, with a total of 80 marks
- Knowledge and understanding of musical elements, contexts and language
- Application of knowledge through the context of six areas of study, each with two set works
- Application of knowledge to unfamiliar works.

What kind of student is this course suitable for?

- The course requires a student who demonstrates a genuine enthusiasm for music and moreover someone prepared to put in the extra time for practice and study outside of lessons
- The course suits students who are well organised, committed and willing to take on a challenge
- A keen interest in extracurricular ensembles is beneficial to develop musicality
- It is essential that students have a working knowledge of music reading before they begin this course
- Students should embrace all types of music to get the most from this course

What could this course lead on to?

Music is a multi-disciplinary subject, which encompasses a wide variety of skills, from performance and interpretation of data, to analysis of complex structures and concepts. Perhaps for this reason alone, music appeals to both ‘scientists’ and ‘artists’, and is as commonly studied alongside Physics and Mathematics as well as Drama and Media Studies.

Music A Level is popular with universities who appreciate the breadth of skills required by students to achieve in the subject and past students have gone on to read subjects as diverse as Music, Engineering, Archaeology, Music Technology, Performing Arts, Mathematics, English, Law, Teaching and Modern Languages.

In addition to this, students have gone on to study for vocational qualifications in Studio Management, Music Business Administration, Sound Engineering, Stage Design and Management.

Physics

GCE A Level

Entry Requirements

In order to ensure that students have the necessary depth of understanding and essential knowledge and skills to be successful in A Level Biology, the entry requirements are a minimum of two 6 grades achieved in two of the following GCSE Sciences:

- GCSE Combined Science: Trilogy
- Separate sciences (Biology, Chemistry or Physics)

Students must also have GCSE Maths to at least grade 6 in the Higher paper, and also Grade 5 in English Language GCSE.

Course Details

Awarding Body: AQA

Contact: Mrs C. Money

Course Number: A2 7408

All of our lives are affected to some extent by Physics; the iPod, the mobile phone, the personal computer and the car that we drive were all designed by engineers with essential training in Physics. In fact, the internet was the invention of High Energy Research physicists. At one extreme, Physics helps us to explain the structure of the atom, whilst at the other end of the spectrum Physics tells us how mind-bogglingly big the universe is and how insignificant humans are on such a scale.

A good Physics qualification can be the cornerstone of further scientific education or a complement to a broader range of study giving an excellent grounding in the knowledge and skills required to become an informed citizen of the 21st Century.

Course Key Features

The course aims to not only provide students with the necessary knowledge of the subject but also the skills to make use of this knowledge in new and changing situations.

Regular experimental work builds upon GCSE practice and helps to develop understanding of the important link between theory and experiment. The structure of the course helps to reinforce the position of Physics at the forefront of scientific research and also the subject's importance in the history of all aspects of human endeavour.

Below is a list of some of the content to be covered over the 2 year course:

- The use of SI units and their prefixes
- Vectors and scalars
- Mechanics
- Mechanical properties of matter
- Electric circuits
- Waves
- Matter
- Quantum and nuclear physics
- Fields

What kind of student is this course suitable for?

The course is a highly respected course designed for committed students ideally studying at least one other science and/or Mathematics. If you have a genuine interest in how things work, why things happen and what makes the universe tick then Physics could be your subject.

What could this course lead on to?

The course supports applications to a wide range of university courses including the Physical Sciences, Engineering, Medicine or Mathematics. Many of our past students have gone on to use their qualification at university in a variety of different fields including Medicine, Electronics, Economics, Maths, Psychology, Physics, Geophysics, Mechanical Engineering, and even Stage Management and Theatre Production.



Physical Education

GCE A Level

Entry Requirements

Grade 4 in English Language and grade 5 in Science.

Course Details

Awarding Body: OCR

Contact: Mr L. Underhay

Course Number: H555

Studying A Level Physical Education will give you a fantastic insight into the amazing world of sports performance. Not only will you have the chance to perform or coach a sport through the non-exam assessment component, you will also develop a wide ranging knowledge into the how and why of Physical activity and sport.

The combination of physical performance and academic challenge provides an exciting opportunity for students. You can perform, and then through the academic study improve your performance or coaching through application of the theory.

Physical Education is studied through a range of different contexts and the impact it has on both ours and other's everyday lives. You will learn the reasons why we do things, why some people outperform others, mentally and physically.

You will also delve into the ethical considerations behind the use of drugs and also the influence that modern technology is having in and on physical activity and sport.

Continued...

Course Key Features

Paper 1: 30% of A Level

- Applied Anatomy and Physiology
- Exercise Physiology
- Biomechanics

Paper 2: 20% of A Level

- Skill Acquisition
- Sports Psychology

Paper 3: 20% of A Level

- Sport and Society
- Contemporary issues in physical activity and sport

Coursework: 30% of A Level

- Performance or coaching
- Evaluation and Analysis of Performance for improvement

Physical Education

What kind of student is this course suitable for?

This is an interesting and challenging learning experience, linking key sporting ideas with practical performance and gaining insight into the relationships they have with each other.

The development of transferable skills including: decision making, psychological understanding of people, independent thinking, problem solving and analytical skills as well as thinking and acting under pressure.

The study of A Level Physical Education opens up a range of possibilities for further study and careers associated with the subject.

You do not have to have a GCSE in PE to undertake this course.

What could this course lead on to?

- A Level Physical Education is an excellent base for a university degree in sports science, sports management, healthcare, or exercise and health. Physical Education can also complement further study in Biology, Human Biology, Physics, Psychology, Nutrition, Sociology and many more.
- A Level Physical Education can open up a range of career opportunities including: sports development, sports coaching, physiotherapy, personal training or becoming one of the next generation of PE teachers. The transferable skills you learn through your study of Physical Education, such as decision making and independent thinking are also useful in any career path you choose to take.



Course Key Features

Paper 1

UK Politics and Core Political Ideas (33.3% of A Level)

This paper will focus on how people engage with politics, considering important features of UK politics from pressure groups to the voting system. As well as this, you will study the three core political ideas for this paper, which includes conservatism, liberalism and socialism. The study of these three ideologies will incorporate key thinkers, divisions and different strands.

Paper 2

UK Government and Non-Core Political Ideas (33.3% of A Level)

This paper will focus on the functioning of politics and government in the UK. Topics for this paper include the UK constitution, the role of parliament, the position of prime minister and the judiciary. Though similar to Paper 1 in the study of political ideas, Paper 2 focuses on one of five non-core political ideas from which anarchism, feminism or nationalism could be studied.

Paper 3

Comparative Politics - USA (33.3% of A Level)

This paper will focus on American politics, with students having to make and write about comparisons with their study of UK politics. A study of US politics will look at topics such as the US constitution, the president, congress, civil rights and participation.

Are you?

- Thinking of becoming a Physiotherapist?
- Aiming to manage a Gym?
- Wanting to become a Personal Trainer?
- Wanting to influence the diet and exercise habits of the nation?
- Fascinated by the human body?
- Studying other sciences?
- Or do you just want to understand the why behind sports performance?

If so, A Level Physical Education is for you.

Politics

GCE A Level

Entry Requirements

5 in English Language and APS 4.

Course Details

Awarding Body: Edexcel

Contact: Ms A. Donnelly and Mr M. Ronan

Course Number: 9PLO

Politics is everywhere and affects everything; there has never been a more relevant or fascinating time to study a subject that provides insight into the political beliefs, systems and practices that are central to understanding the modern world. The course will allow you to consider, debate and write about the big philosophical questions we are posed in our journey of political understanding, such where does power lie and what helps underpin our political opinion?

What kind of student is this course suitable for?

This course is suitable for students who enjoy talking and thinking about current affairs. A Level Politics encourages students to be up to date and interested in the news and be prepared to take part in discussion and debate. As well as discussing ideas, students should also be willing to be coached to write effective and complex responses that are analytical, evaluative and consistently use political terminology.

What could this course lead on to?

A Level Politics provides students with a range of skills that would allow students to be successful at undergraduate level, degree-apprenticeships or other employment.

Students who enjoy the subject go on to study Politics, International Relations or PPE (Philosophy, Politics and Economics) at degree level. Politics is also a popular joint honours degree option, with students combining it with other subjects such as English or History. Politics lends itself well to students who are interested in a career in law, the civil service, media or journalism.

Psychology

GCE A Level

Entry Requirements

No prior knowledge of Psychology is required. Students should have a minimum of grade 5 passes in GCSE Mathematics and English Language.

Course Details

Awarding Body: AQA

Contact: Ms. L. Dixon / Mrs A. Wildash

Course Number: A Level: 7182

Psychology: "...the scientific study of behaviour, experiences, and mental processes..."

The course gives a broad introduction to the scope and nature of Psychology as a science. The emphasis is on applying knowledge and understanding to a range of topic areas such as memory, attachment and psychopathology, and to engage students in issues and debates in contemporary psychology. Students will learn the fundamentals of the subject and develop skills valued by higher education (HE) and employers, including critical analysis, independent thinking and research.

Course Key Features

The course aims to provide you with an understanding of methods and approaches in Psychology. This is done by studying different psychological theories, studies and concepts and taking part in and carrying out practical research activities involving collection, analysis and interpretation of data.

Throughout the course the ethical implications of psychological research will also be discussed. During the course some of the areas that will be studied include:

- How can we improve the accuracy of eye witness testimony?
- How do our early relationships influence our adult relationships?
- How do we treat phobias?



Course Key Features

A Level Paper 1 Introductory topics in Psychology

- A. Social Influence
- B. Memory
- C. Attachment
- D. Psychopathology

Written Exam: 2 hours
96 marks in total 33.3% of A Level

A Level Paper 2 Psychology in Context

- A. Approaches in Psychology
- B. Biopsychology
- C. Research Methods

Written Exam: 2 hours
96 marks in total 33.3% of A Level

A Level Paper 3 Issues and Options in Psychology

Compulsory content

- A. Issues and debates in Psychology
- Optional
- B. Gender
- C. Schizophrenia D. Aggression

Written Exam: 2 hours
96 marks in total 33.3% of A Level

What kind of student is this course suitable for?

Do you have a good standard of literacy and numeracy? Do you have an open mind? Do you like science? Will you take part in debates and discussions? Are you curious and want to have a greater understanding of human behaviour? Are you willing to read around a topic? If the answers are YES, then in Psychology you will find an A Level that will complement all your other subjects.

What could this course lead on to?

Students who have studied Psychology have gone onto higher education in a variety of fields including Law, Medicine, Anthropology, Biological Sciences and Nursing, however many students enjoy Psychology so much they go on to study it at university in its own right.

A degree in Psychology can lead on to:

- Clinical Psychology - Clinical Psychologists work with medical staff and patients of all ages
- Educational Psychology - Educational Psychologists deal with children/young people, including those with special needs or gifted children
- Occupational Psychology - Occupational Psychologists advise on training, work environments, job satisfaction, productivity etc.
- Criminological or Legal Psychology - Criminologists work in prisons, custody centres, special hospitals and secure units
- Sports Psychology - Sports Psychology is an area helping to improve sports performance and participation

Sociology

GCE A Level

Entry Requirements

A minimum GCSE grade of 5 in English Language is required for entry to this course.

Course Details

Awarding Body: AQA

Contact: Ms L. Dixon

Course Number: A Level: 7192

Sociology is an immensely challenging and exciting discipline. It involves the study and explanation of human and social life, groups and societies. Sociologists are interested in understanding the ways in which society influences and shapes our lives.

Studying Sociology helps you make sense of your own experiences in society. It can give you new ways of seeing the world, encouraging you to question aspects of it you had previously taken for granted. Sociology can provide you with the 'tools' to become a better informed and more socially aware member of society.

What kind of student is this course suitable for?

Sociology is a very popular yet demanding subject. Sociology students should have an interest in social and political issues, plus current affairs. Successful sociologists have the confidence and willingness to participate in discussions and debates; are open minded and respect the views of others. Students will be expected to write effectively and develop sophisticated essay writing skills. Sociology compliments many other curriculum areas.

What could this course lead on to?

Successful completion of Advanced Sociology will give access to a range of higher education opportunities. Sociology is about understanding people and society so connects to many university courses and careers. The knowledge and skills developed during the course enable students to pursue a variety of career choices, including journalism, law, criminology, management, social services and human relations.

Course Key Features

Sociology is a wide-ranging subject involving many areas of social life, including family and households, education, belief systems, and crime and deviance. To enjoy Sociology, you need to be interested in the world around you and have an open, enquiring mind.

You will learn basic theories or ways of looking at society and develop the skills to assess different views and reach conclusions. Within your studies you will encounter many debates, including;

1. How does the media influence criminal behaviour?
2. Is Marxist theory still relevant?
3. Why do girls generally outperform boys in GCSEs?
4. How do religious sects influence behaviour?
5. How has the family changed?

Course Specification

A Level 7192/1: Education with Theory and Methods

Written Examination 2 hours 33.3% of total A Level mark

A Level 7192/2: Families and Households and Beliefs in Society

Written Examination 2 hours 33.3% of total A Level mark

A Level 7192/3: Crime and Deviance with Theory and Methods

Written Examination 2 hours 33.3% of total A Level mark



Course Key Features

The students will develop skills to enable them to make an effective contribution to the care sector.

In order to understand the nature of Health and Social Care, students' learning is applied to a range of work-related contexts. This is achieved through a variety of approaches, including work experience, links with local employers, case studies, and research. The student will be assessed using a combination of portfolio and exam units.

Pearson Level 3 Alternative Academic Qualification BTEC National in Health and Social Care (Extended Certificate)

Entry Requirements

The student should have obtained grade 4 in English Language, grade 4 in Maths, or grade 4 in English Language and a Level 2 Pass in Health and Social Care.

Course Details

Awarding Body: Pearson

Contact: Mrs C. Heslop

Course Number: Extended Certificate
610/3964/0

The course offers students the opportunity to acquire knowledge and understanding of health, early years care and education and issues affecting the health and social care sector. The course has been designed so that it can be undertaken by candidates entering this vocational area for the first time. Progression through the course will provide a suitable basis for further study in related subjects in Higher Education as well as a valuable preparation for careers in any area of Health and Social Care.

What kind of student is this course suitable for?

This course is suitable for students who want a broad-based vocational qualification. You need to be self-motivated, able to work independently and meet deadlines.

What could this course lead on to?

This qualification has been designed to allow for flexible progression routes, moving on to higher education or further training and/or employment. A wide range of opportunities are available, for example vocational degree courses, apprenticeships, teaching and higher studies in Health and Social Care and a wide range of other subjects.

Pearson Level 3 Alternative Academic Qualification BTEC National in Applied Science (Extended Certificate)

Entry Requirements

A minimum of grade 55/555 in Combined/ Separate sciences. Supported by a Grade 4 English Language and Maths Grade 4 from higher tier.

Course Details

Awarding Body: Pearson

Contact: Mrs J. Axon

Course Number: 610/3965/2

What could this course lead on to?

This exciting course has been developed in consultation with universities and sector experts to ensure that students gain the knowledge and skills required to progress into higher education.

This course is an excellent platform to develop a general knowledge and understanding of all 3 disciplines of science, acting as a facilitator to progression into a wide array of Science and STEM related Degree courses, Apprenticeships and Careers.

Students will also develop laboratory practical and investigation skills alongside, research, writing, communication and analysis skills which are all relevant and transferable to many career choices.

Course Key Features

Completion of this course is equivalent to one A Level and is directly equated to UCAS points.

The course is composed of 3 externally assessed units (examination) in Year 12 and two internally assessed units (coursework) in Year 13.

Over two years students will study four mandatory units, three that are externally assessed through exams and one assessed internally by teaching staff. An additional optional module, also internally assessed will be selected from a choice of two.

Mandatory units:

- Principles and applications of biology; structure and function of cells and tissues, biological molecules, enzymes and their role in organisms
- Principles and applications of chemistry; structure of the periodic table and its implications on physical and chemical properties of substances
- Principles and applications of physics; waves and their applications, force principles and their application in transportation and construction of electrical circuits
- Practical Scientific Procedures and Techniques. Students will be introduced to quantitative laboratory techniques, including chromatography, colorimetry and laboratory safety, which are relevant to the scientific laboratory environments

Optional units:

- Scientific investigation skills Investigative research, including planning, data collection, analysis and evaluation
- Contemporary issues in science Contemporary scientific issues including the reliability of sources of scientific information and their associated validity

Course Key Features

The BTEC National in Business uses a combination of assessment styles to give students the confidence to apply their knowledge to succeed in the workplace – and have the study skills to continue learning on higher education courses and throughout their career. The range of vocational assessments showcases student learning and achievements to best effect when they take their next step.

The Extended Certificate has four units of study over two years:

1. Developing a Marketing Campaign which is an exam board set and marked controlled assessment. It is a practical task to create a marketing campaign for a given product or service which draws on pre-released information.
2. Exploring Business which is a coursework module.
3. Personal and Business Finance which is an external exam.
4. Recruitment and Selection Process which is a coursework module.

Pearson BTEC Level 3 National Extended Certificate in Business

Entry Requirements

Level 2 Pass in BTEC Enterprise, or GCSE Business grade 4 or above if taken. GCSE grade 4 in English Language and grade 4 in Maths.

Course Details

Awarding Body: Edexcel

Contact: Mrs A. Tovey

Course Number: 601/7159/5

The BTEC National in Business combines up to date industry knowledge with the right balance of practical, research and study skills students need to succeed in higher education and other careers.

The course has been developed by employers and educators to ensure that students will 'hit the ground running' when they move on to the next stage of their lives, whether that's further study or employment.

The Extended Certificate is a two year course equivalent to A2. The course includes a mixture of mandatory content and a range of bespoke units to equip learners with the skills they need in the workplace or specialist higher education courses.

What kind of student is this course suitable for?

If you have studied Business at Key Stage 4 you will have gained a Pass or a grade C in either BTEC or GCSE and some C grades in your other GCSE subjects. You will enjoy Business and be interested in developing your Business skills further.

What could this course lead on to?

The BTEC awards are designed to provide a progression route to higher education and further training for employment.



Pearson BTEC Level 3 National Extended Certificate in Creative Digital Media Production

Entry Requirements

Grade 4 in GCSE English Language.

Course Details

Awarding Body: Edexcel

Contact: Mr I. Woodcock

Course Number: 601/7467/5

The BTEC National in Creative Digital Media Production combines up to date industry knowledge with the right balance of practical, research and study skills students need to succeed in higher education and other careers. The course has been developed by employers and educators to ensure that students will 'hit the ground running' when they move on to the next stage of their lives, whether that's in to further study or employment. The Extended Certificate is a two year course and will include a mixture of mandatory content and a range of bespoke units to equip learners with the skills they need in the workplace or specialist higher education courses.

The course is designed to give students an introduction to and an understanding of pre-production techniques used in media industries, develop communication skills and develop software skills and knowledge of media production techniques.

What kind of student is this course suitable for?

Students who have an interest in Media, have reasonable IT skills and would like to improve their knowledge, skills and understanding of Media production.

What could this course lead on to?

The BTEC awards are designed to provide a progression route to higher education and further training or employment.

Course Key Features

The BTEC National in Creative Digital Media Production uses a combination of assessment styles to give students the confidence to apply their knowledge to succeed in the workplace – and have the study skills to continue learning on higher education courses and throughout their career.

The range of vocational assessments – both practical and written – means students can showcase their learning and achievements to best effect when they take their next step.

The Extended Certificate has four units of study over two years:

1. Media Representations which is an on screen external exam.
2. Pre-production portfolio which is a coursework module.
3. Responding to a Commission which is an exam board set and marked controlled assessment. It is a practical task tackling an everyday challenge which draws on pre-released information.
4. A coursework unit of magazine production.

Pearson Level 3 Alternative Academic Qualification BTEC National in Information Technology (Extended Certificate)

Entry Requirements

Grade 4 in English Language and Level 2 Pass in BTEC IT.

Course Details

Awarding Body: Pearson

Contact: Mr A. Marshall

Course Number: 610/3960/3

The Pearson Level 3 Alternative Academic Qualification BTEC National in Information Technology (Extended Certificate) allows students to study the fundamental knowledge of Information Technology covering the role and implications of using Information Technology systems and cyber-security threats and how to manage attacks. Students will also develop important skills for creating websites to meet a specific purpose and to manage data through the development of a relational database solution.

The qualification is designed to be taken alongside A Levels as part of a study programme and can link to learning in A Level Mathematics and A Level Business Studies. It is intended for students that wish to progress into higher education as a pathway to employment.

What kind of student is this course suitable for?

You will have gained a Level 2 Pass in BTEC IT if taken, and some grade 4 passes in your other GCSE subjects. You will enjoy IT and be interested in developing your IT skills.

What could this course lead on to?

The BTEC awards are designed to provide a progression route to higher education and further training or employment.

Course Key Features

The Pearson Level 3 Alternative Academic Qualification BTEC National in Information Technology (Extended Certificate) combines up to date industry knowledge with the right balance of practical, research and study skills students need to succeed in higher education and other careers. The Extended Certificate is a two year course equivalent to A2. The courses include a mixture of mandatory content and a range of bespoke units to equip learners with the skills they need in the workplace or specialist higher education courses.

The Extended Certificate has four units of study over two years:

1. Information Technology Systems External Exam
2. Cyber Security and Incident External Exam
3. Website Development Internal Coursework module
4. Relational Database Development Internal Coursework module

External Assessment 66%

Mandatory content 100%

External Assessment Administration 2 x

Exams: 1 x 2hrs, 1 x 2hrs 15mins

Internal Assessments 2 units

Internal Assessment Length Unit 3:

15hrs Unit 4: 15hrs Learners will be assessed for 30hrs (learners complete two internal assessments)

Total assessments taken 4 units



The Extended Project Qualification (EPQ)

The EPQ allows each student to embark on a largely self-directed and self-motivated project. Students must choose a topic; plan, research and develop their idea and decide on their finished product. They will however, be supported by teachers with the option of weekly support lessons.

Universities support and value the EPQ as evidence of a student's ability to use a range of skills that are vital for successful study in higher education.

During the EPQ students will learn to:

Manage – identify, design, plan and complete a project (or task within a group project), applying organisational skills and strategies to meet their stated objectives.

Use resources/research – obtain and select information from a range of sources, analyse data, apply it relevantly and demonstrate understanding of any appropriate connections and complexities of their topic.

Develop and realise – use a range of skills, including using new technologies, to solve problems, to take decisions critically, creatively and flexibly and to achieve their aims.

Review – evaluate the outcome, including their learning and performance.

We will expect a lot of our students to do the EPQ as part of their studies, especially if it will help develop skills and lead to better qualifications. It will not though, be compulsory for all students.

The EPQ:

- Gives students the opportunity to choose their own topic
- Makes students responsible for their own learning and development
- Inspires and motivates students completing the project gives them greater confidence and a sense of achievement
- Teaches new skills such as independent research, project management, reflection and self-directed learning
- The EPQ attracts 50% of the UCAS points awarded for an A Level.

The EPQ encourages creativity and curiosity. A project topic may be directly related to a student's main study programme, but should look beyond the specification.

Apply now

You can apply to join our Sixth Form **online, over the phone or via email.**

If you didn't make it to our Open Evening we'd love the opportunity to meet you, show you around our Sixth Form Centre and explore your options with you. We would also like to introduce you to some of our current Sixth Formers to give you an opportunity to have a chat, ask questions and hear first-hand what their experience has been. **Personal tours can be arranged to take place across the school year, all you need to do is contact us:**



jesmondparkacademy.org.uk



0191 281 8486



sixthform@jesmondparkacademy.org.uk

To apply online, head to the Sixth Form section of the website and click onto the **Applying page**, here you can **complete our Register Your Interest Form** with your details. On submission of the form, **one of our Support Team will contact you** to discuss your options and next steps.

We are a very popular Sixth Form, with a growing number of students joining us from other schools across the city. We strongly recommend that you contact us to express your interest as soon as possible to ensure we can find you a place on your first choice of subjects you want to study.

Our current Jesmond Park Academy students will be invited to join further meetings with our Sixth Form staff to help guide you in your options for Sixth Form, along with an individual interview in the summer term to confirm your choices.

Helpful Tips

- Speak to our Support Team about your career ambitions and goals, they will help you find the right options for you
- Discuss your thoughts and options with family and friends
- Come and visit our Sixth Form Centre
- Get advice from teachers and careers advisors
- Think carefully about what you want to do in the future. Think about what you are good at and what you enjoy
- Visit our website for more information about our Sixth Form and support available to students
- Don't be afraid to ask us questions, contact us via phone or email

Course Entry Requirements

Department Course	Entry Requirements
Art & Design	4 in Art and APS 4
Biology	5 in English Language, 6 in Maths (Higher paper), 66 in Science
Business	4 in Maths and 5 in English Language. You must have a L2M in BTEC Enterprise/Travel if taken. You must have 5 in GCSE Business if taken or APS of 4
Chemistry	5 in English Language, 6 in Maths (Higher paper), 66 in Science
Computing	5 in English Language, 5 in Maths and APS 4.3. If completed GCSE Computing, must have a grade 5
Dance	4 in English Language and APS 4
Product Design	4 in English, 4 Maths and grade 5 in D&T & APS 4.3
Drama & Theatre	4 in English Language, 4 in Drama (if taken) and APS 4
Economics	Grade 5 in Maths and 6 in English Language. You must have a L2M in BTEC Enterprise/Travel if taken. A 5 in GCSE Business if taken
English Language	5 in English Language, 4 in English Literature & APS 4
English Literature	4 in English Language, 5 in English Literature & APS 4
English Language & Literature	4 in English Language, 4 in English Literature & APS 4
Film Studies	4 in English Language, 4 in English Literature & APS 4
Geography	4 in English Language, 4 in Geography & APS 4
History	5 in English Language or English Literature, must have 5 in History & APS 4.3
Mandarin	GCSE Grade 6 in Chinese (Spoken Mandarin) and an APS of 6.0
Maths	7 in Maths
Further Maths	8 in Maths
Media Studies	4 in English and APS 4

Department Course	Entry Requirements
Modern Foreign Languages (French)	6 in French and APS 4.5
Modern Foreign Languages (Spanish)	6 in Spanish and APS 4.5
Music	5 in Music plus a grade 4 and APS 4
Physics	5 in English Language, 6 in Maths (Higher paper), 66 in Science
Physical Education	4 in English Language, 55 in Science and APS 4
Politics	5 in English Language and APS 4
Psychology	5 in English Language, 5 in Maths and APS 4.3
Sociology	5 in English Language and APS 4.3
BTEC Health & Social Care	4 in English Language, grade 4 in Maths, or grade 4 English Language and a L2 Pass in Health & Social Care
BTEC Applied Science	55/555 in Combined/Triple Science and a grade 4 in English and 4 in Maths (Higher paper)
BTEC Business	L2 BTEC Business Pass or Business grade 4 or above if taken. Grade 4 in English Language and grade 4 in Maths.
BTEC Creative Media Production	Grade 4 in GCSE English Language and L2 Pass in BTEC IT or other BTEC. APS 4
BTEC IT	Grade 4 in GCSE English Language and L2 Pass in BTEC IT or other BTEC. APS 4

GCSE Average Points Scores (APS)

How are they calculated?

Your average points score is simply the sum of all of your GCSE grade points divided by the number of GCSE courses taken.

For example a student who achieves two grade 7s, four grade 6s and three grade 5s would have an average point score of $7+7+6+6+6+6+5+5+5 = 53$ divided by $9 = 5.89$. Grades achieved from Level 2 BTEC or other vocational courses are not included in the calculation.

Please note that to study any A Level subject you need to have at least grade 4s in a minimum of four GCSE subjects.



Q6 Jesmond Park Academy Sixth Form



Jesmond Park Academy
Jesmond Park West
Newcastle upon Tyne
NE7 7DP



0191 281 8486



sixthform@jesmondparkacademy.org.uk



jesmondparkacademy.org.uk/sixthform



Part of the

Gosforth Group

