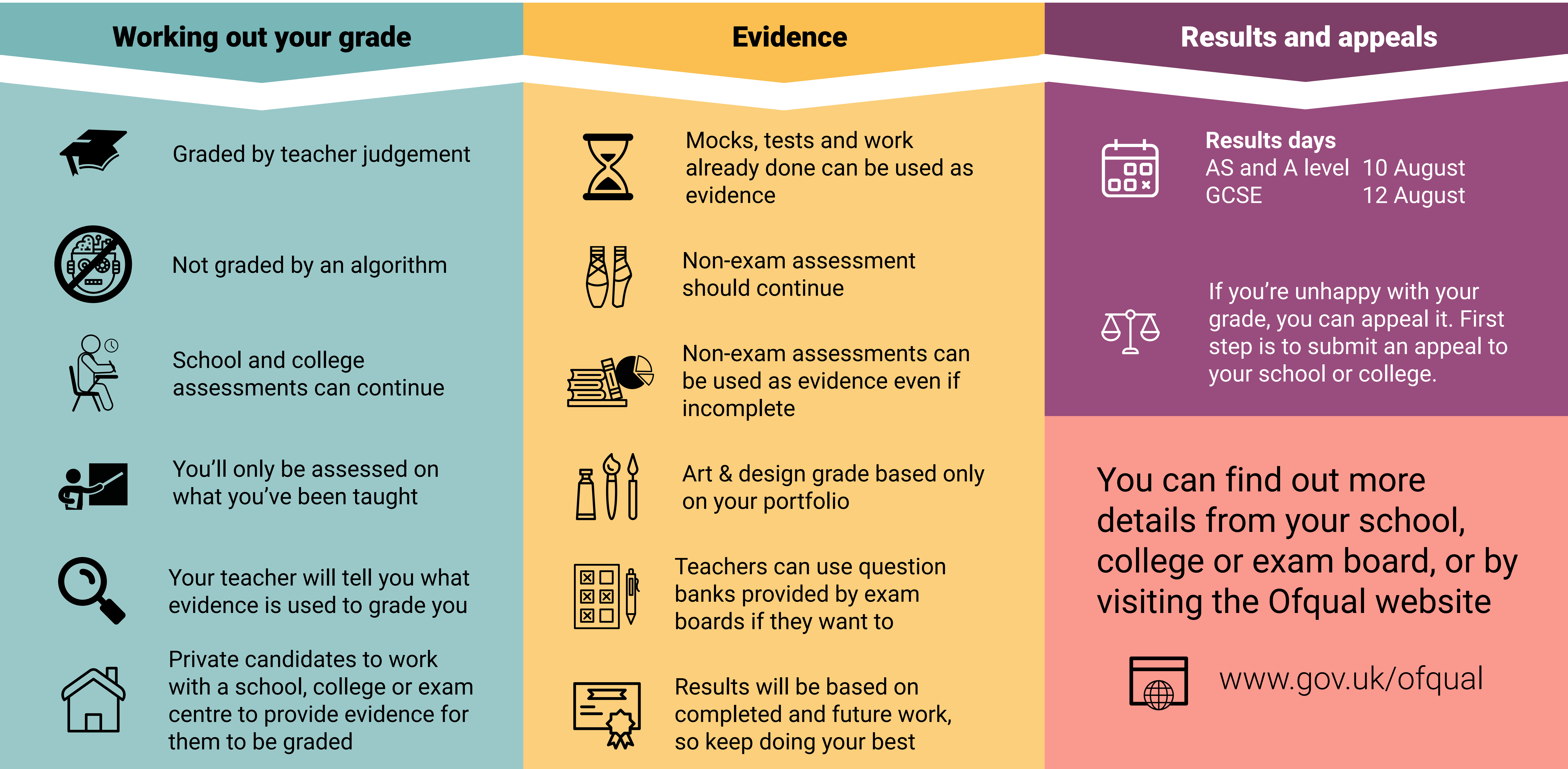


# How GCSEs, AS and A levels will be awarded in summer 2021



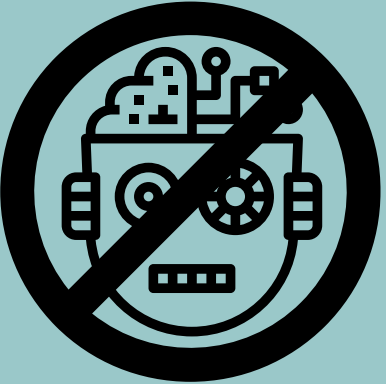
Ofqual/21/6751/2



## Working out your grade



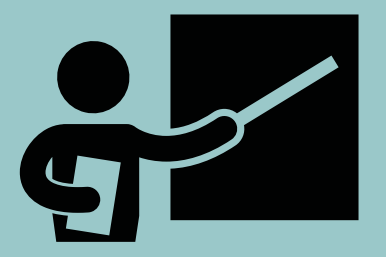
Graded by teacher judgement



Not graded by an algorithm



School and college assessments can continue



You'll only be assessed on what you've been taught



Your teacher will tell you what evidence is used to grade you



Private candidates to work with a school, college or exam centre to provide evidence for them to be graded

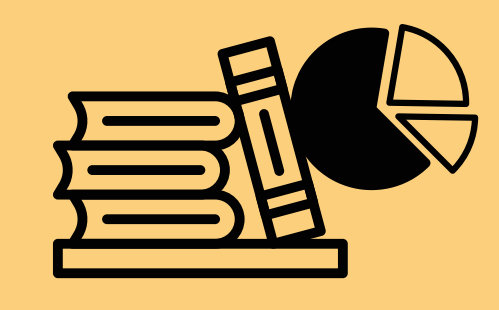
## Evidence



Mocks, tests and work already done can be used as evidence



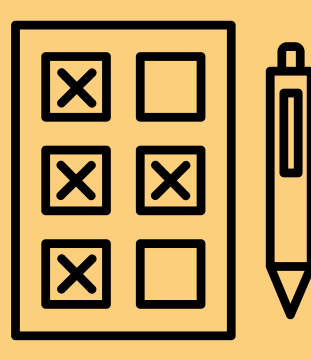
Non-exam assessment should continue



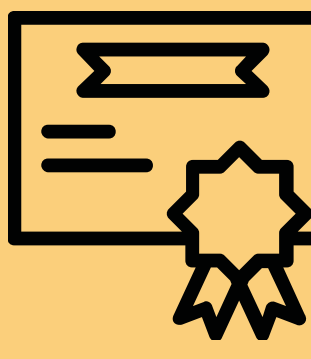
Non-exam assessments can be used as evidence even if incomplete



Art & design grade based only on your portfolio

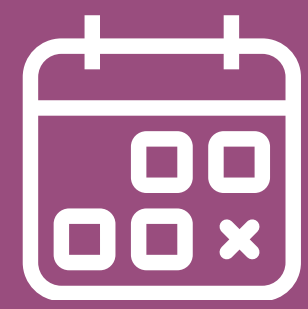


Teachers can use question banks provided by exam boards if they want to



Results will be based on completed and future work, so keep doing your best

## Results and appeals

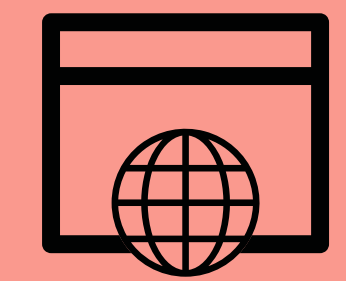


**Results days**  
AS and A level 10 August  
GCSE 12 August



If you're unhappy with your grade, you can appeal it. First step is to submit an appeal to your school or college.

You can find out more details from your school, college or exam board, or by visiting the Ofqual website



[www.gov.uk/ofqual](http://www.gov.uk/ofqual)